

LOPA-15

Surface / Wraps / Shallow Profile

PROJECT:

CAT.NO:

NOTES:

DATE:

TYPE:

VOLTS:

PEERLUX[®]
SERIES

GENERAL DESCRIPTION

Shallow profile fluorescent luminaire for surface or pendant mounting. Recommended for general area lighting. Suitable for continuous row installation. Optional wire guard available.

CONSTRUCTION

Rigid die-formed body constructed from code gauge steel.

FINISH

Standard finish is baked white enamel.

SHIELDING

Clear acrylic prismatic wrap-around diffuser with ribbed sides for balanced light control; easily removable, no hardware to loosen.

ELECTRICAL

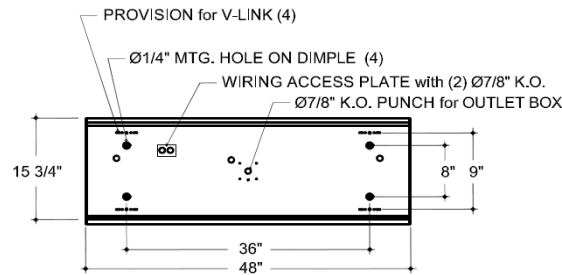
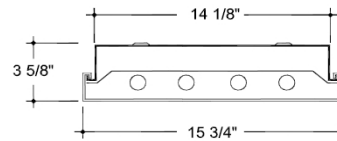
Instant start electronic ballast, 120V-50/60Hz. Other ballasts and voltages available upon request.

CERTIFICATIONS

CSA and/or UL approved.



DIMENSIONS



ORDERING INFORMATION

LOPA	15	4						
FIXTURE	MODULE WIDTH	MODULE LENGTH	LAMPS	WATTS	SHIELDING	REFLECTOR FINISH	VOLTAGE	BALLAST / DRIVER
	15 = 15 3/4" nominal	4 = 4'	2 = 2 3 = 3 4 = 4 6 = 6	28 = 28W (T5) 54 = 54W (T5HO) 32 = 32W (T8)	AC = Wrap-around Acrylic lens * WG = Wireguard WG12 = Wireguard with #12 lens * OMIT for none	MR = Maximum Reveal White 97% OMIT for B.W.E. (Standard White)	120 = 120 Volts 277 = 277 Volts 347 = 347 Volts	IS = IS PRS = PRS RS = RS

*not available for 6 T5HO lamps